



### PRODUCT DESCRIPTION

Single component hydrophilic urethane grey paste

### PAKAGING

24 cartridges per case  
320 ml (10.8 oz.) per cartridge

### EXPANSION INFORMATION BY VOLUME

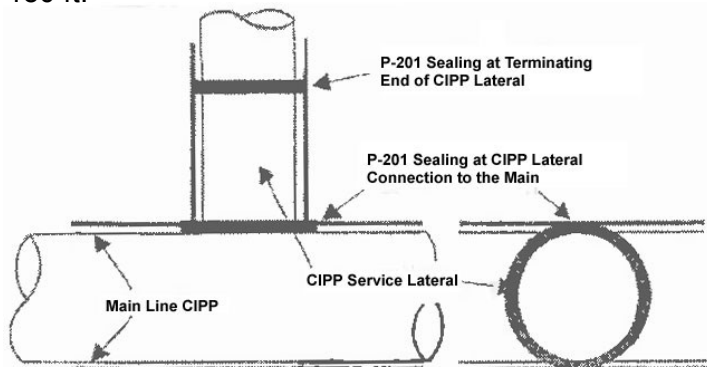
Approximately 100% (2 times by volume)

### GENERAL DESCRIPTION

P-201 is a water swelling single component urethane rubber used as a water stop in a variety of Cure-In-Place-Pipe (CIPP) applications to seal infiltration at connections and annular spaces. P-201 is a material that can be applied on wet or uneven surfaces and functions in a wide range of temperatures, ground water conditions, pressures, and hydration/dehydration cycling.

### TYPICAL USES

ADEKA ULTRASEAL® P-201 has been utilized in a wide variety of construction applications including the elimination of infiltration between the main line and installed CIPP main line and service laterals. P-201 will expand in the direction of least resistance. When expansion is inhibited, the product will produce expansion pressure against pipe walls effectively sealing off infiltration with hydrostatic head pressures as high as 150 ft.



### CURED-IN-PLACE-PIPE (CIPP)

ADEKA ULTRASEAL® P-201 is an excellent product to seal infiltration tracking that occurs between host pipes and installed main line and service lateral CIPP.

### MAIN LINE CIPP

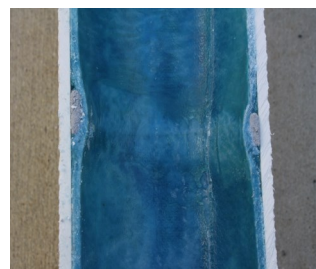
P-201 has successfully been used in installed CIPP at the ends near manholes to seal annular spaces that occur between installed main line CIPP and the host pipe. This sealing eliminates water tracking in the annular space that otherwise would enter manholes and service laterals that have not been rehabilitated.

### SERVICE LATERAL CIPP

P-201 is a commonly used material to effectively eliminate infiltration at the connection of the lateral to the main and the terminating end of installed CIPP service laterals

The ability for P-201 to be applied to wet surfaces with cracks and voids makes it an ideal material for CIPP service lateral applications.

P-201 is capable of sealing and eliminating infiltration, even after years of hydration and dehydration cycling.



OCM, Inc.

1215 Henri Drive, Wauconda, IL 60084

Toll Free: 866-457-5710 • Phone: 847-462-4258

FAX: 847-462-4259

www.adeka.com • www.ocm-inc.com

sales@ocm-inc.com