



World's Largest in Lateral Rehabilitation!

Repairing Municipalities Infrastructure
Through Value-Engineering



BLD "SERVICE CONNECTION SEAL + LATERAL" Full Wrap Style Connection Seal

Product

- BLD "Service Connection Seal + Lateral" service lateral rehabilitation is performed using a proven, non-disruptive process. Working remotely from inside a mainline sewer, we rehabilitate service laterals and create a watertight seal at the connection while structurally repairing the lateral line. This allows the process to take place without requiring access to the lateral pipe from the property side.
- This one piece "Service Connection Seal + Lateral" uses a polyester felt tube with a sewn or semi-rigid flange that covers up to 16" in a full wrap/360 degrees inside the mainline pipe. There is a smooth tapered transition to the host pipe continuing up the service lateral that creates a watertight fitting at the interface connection. In addition, the use of Hydrophilic Sealants and Silicate Resins applied to the backside of the full wrap/360 degree connection enhances a watertight seal.
- This process requires minimal access from the homeowner or business side of the property, as all work is completed from the mainline. The finished lateral product meets or exceeds ASTM F1216 for Cured-In-Place-Pipe.
- Typically for lengths up to 35 feet +, the installation is achieved in a one piece jointless tube that will structurally repair the lateral from the mainline to a cleanout, access point, or termination point.
- No cleanout/access point is necessary for laterals up to 35 feet +, as this process can be installed as a one piece jointless tube that will terminate at the property line or designated point. A cleanout/access point may be needed if cleaning cannot be accomplished from the mainline.
- For lengths over 35 feet that cannot be cleaned from the mainline, a cleanout/access point is required to perform an overlap process. This method is a pull-in or an inversion installation from a cleanout/access point back to the mainline, overlapping a minimum of two feet.
- Processes can be installed rapidly with the use of ambient cure Polyester or Vinylester resins.
- Diameters of 4-inch and 6-inch service lateral rehabilitation have been successfully completed in 8-inch to 24-inch mainlines. Customizable applications in larger pipes.

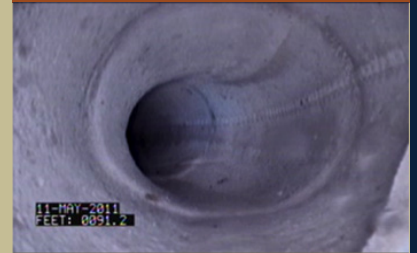
Preparation

- The service connection is inspected using a radial view camera system in the mainline pipe. The service lateral is inspected with a mini camera that can be propelled into the service lateral from the mainline pipe or pushed in from a cleanout/access point.
- This video inspection provides valuable information about the condition and profile of the connection and lateral pipe.
- It is necessary to thoroughly clean the pipe prior to the rehabilitation process.
- We typically use high-pressure water to free the service lateral of roots, mineral deposits, grease, sand and sludge.
- After cleaning, and before installation, another video inspection insures that the lateral pipe is properly prepared.
- Cleanouts/access points may be needed if cleaning cannot be accomplished through the mainline.

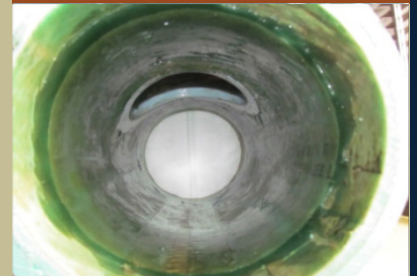
Installation

- An installation device (silicone bladder installation lateral train) will be used to carry and install the "Service Connection Seal + Lateral".
- After loading the "Service Connection Seal + Lateral" into the lateral train, it is then placed into the mainline pipe and positioned at the damaged service connection with the use of a rotation device.
- The installation device is then used to hold this one piece "Service Connection Seal + Lateral" in place at the connection while it is inverted into the service lateral using an inversion silicone hose with air pressure.
- The curing process begins, during which the liner is held in place by the inversion silicone bladder at the recommended air pressure.
- Once the "Service Connection Seal + Lateral" has fully cured, the installation device is removed, leaving the service lateral structurally rehabilitated, a watertight seal at the connection and ready for normal use.

Service Lateral Rehabilitation



Full Wrap Service Lateral Rehabilitation



Providing a structurally sound service lateral with a watertight seal at the connection

